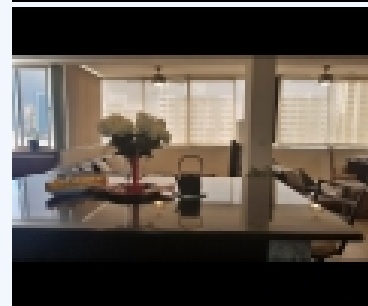
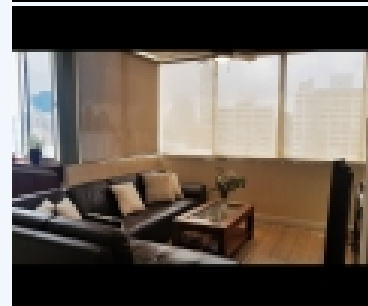
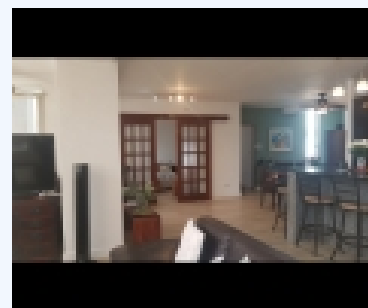


# # TB157, PUNTA PAITILLA ELEGANTE CONDOMINIO DE LA CIUDAD - ENORME REDUCCIÓN DE PRECIOS

Sold. \$ 198,000.00



## Panama City - Punta Paitilla, PANAMÁ

Breezy upper floor apartment with panoramic views providing a quiet oasis. 3 bedrooms, 3 bathrooms, 157 m². Complete custom quality renovation, with designer touches in every room. High end furnishing as an extra option for purchase with deep discounts. Ready to move in immediately or ready for you to buy as an investment and rent out as income producing property now.

Drastically Reduced \$275,000> \$259,000> \$225,000> \$198,000 [CLICK ON> INSTAGRAM LOCATION](#) ~

**LOCATION ~ LOCATION NO NEED FOR A CAR!** PH Plaza Paitilla is in a prime city location, just footsteps from everything you want now - and in the future - yet just minutes to the Panama interior - Beaches - Jungle - Mountains - Pueblos. One of the best locations and neighborhoods in Panama City, and like any city, location is everything - walk everywhere. Plus, 8.5 km of cycling, running, walking on the Cinta Costera oceanside boardwalk, sport and exercise area which connects directly to Amador Causeway, a seaside playground with lots of outdoor activities and open spaces. Fun, commerce, and culture, and everything is so close. Panama City is one of the most exciting and safest cities in Latin America, and you will be at the center of it. Ideal for active singles or families! Connect with us today to start your move!

**ABOUT THE**

**APARTMENT:**

Privacy with just 2 Condos per floor Solidly constructed building Quiet neighbors, residential views Italian porcelain flooring Open style living, kitchen, dining area Brand new stove and refrigerator Save huge on electricity with Inverter Refrigerator Black Italian Granite Countertops & Island Bar Easy clean Italian Porcelain Backsplash Wired for Internet & Cable TV 3 air conditioners and wiring for a 4th Quality overhead fans in every area 3 Smart TV's as an extra option Bathtub & 3 showers (2 Rainfall) Plenty of storage & closet space Low monthly electric bill Low Maintenance fee \$200 monthly Gas & garbage removal included in low maintenance fee Multi-lock door Wired for Security system **ABOUT THE BUILDING AND AREA:** Pet friendly building Prime parking space beside elevator Building has very large secure outdoor space for walking/jogging Building has meeting room area for rental Vet services, travel agency, dry cleaners, language school plus many more services in building 5 minute walk to Seaside Park with children's playground and pet park 20 minutes from International Airport and near the ramp to the Corredor Sur **AGAIN: LOCATION ~ LOCATION ~ LOCATION** On a peninsula packed with high-rise towers, exclusive Punta Paitilla is known for its upscale shopping malls. These include the landmark Multicentro Mall, with movie theaters, designer fashion, outdoor eateries serving sushi, burgers and fusion cuisine, and smart cocktail bars. Pharmacies, 3 supermarkets, 3 hospitals, clinics, restaurants, including a scattering of Kosher

### BASE INFORMATION:

Bed : 3  
Bath : 3

### LAND INFORMATION:

Square feet : 157

### CONVENIENCE:

**General Amenities:** Washer/Dryer, Walk-In Closet, Swimming Pool, Stove, Refrigerator, Microwave, Gas Hot Water, Dishwasher, Cable TV, Cable Internet, **Appliance Amenities:** Range/Oven, **Energy Savings Amenities:** Propane Hot Water, Gas Stove,

### NEIGHBORHOOD:

Super market : 5 minutes by Car  
School : 10 minutes by Car  
Park : 5 minutes by Walk  
Cinema : 10 minutes by Walk  
Beach : 60 minutes by Car  
Coffee shop : 5 minutes by Walk  
Airport : 20 minutes by Car  
Bus station : 25 minutes by Car  
Police station : 5 minutes by Car  
Hospital : 5 minutes by Car  
Town center : 10 minutes by Car  
Shopping center : 10 minutes by Car

restaurants, bakeries, cafes, salons, two 5-star hotels, casinos, gyms, everything you would ever need can be found in Paitilla.



Name	<b>Terry Bradford-Gugel, Owner</b>
Phone	(949) 630-9427 (US/Canada)
Mobile	+507-6049-7736 (WhatsApp)